

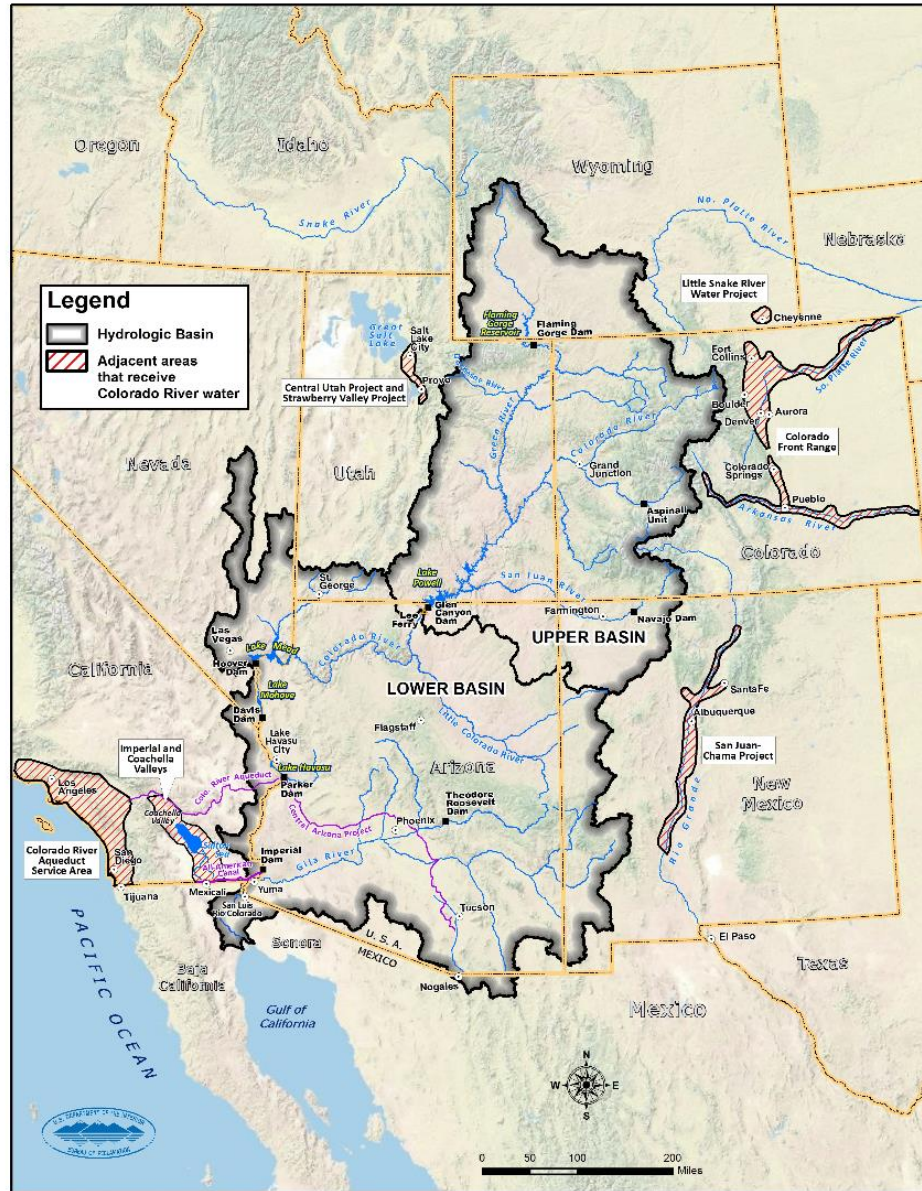
## Overview of Colorado River Reservoir Management



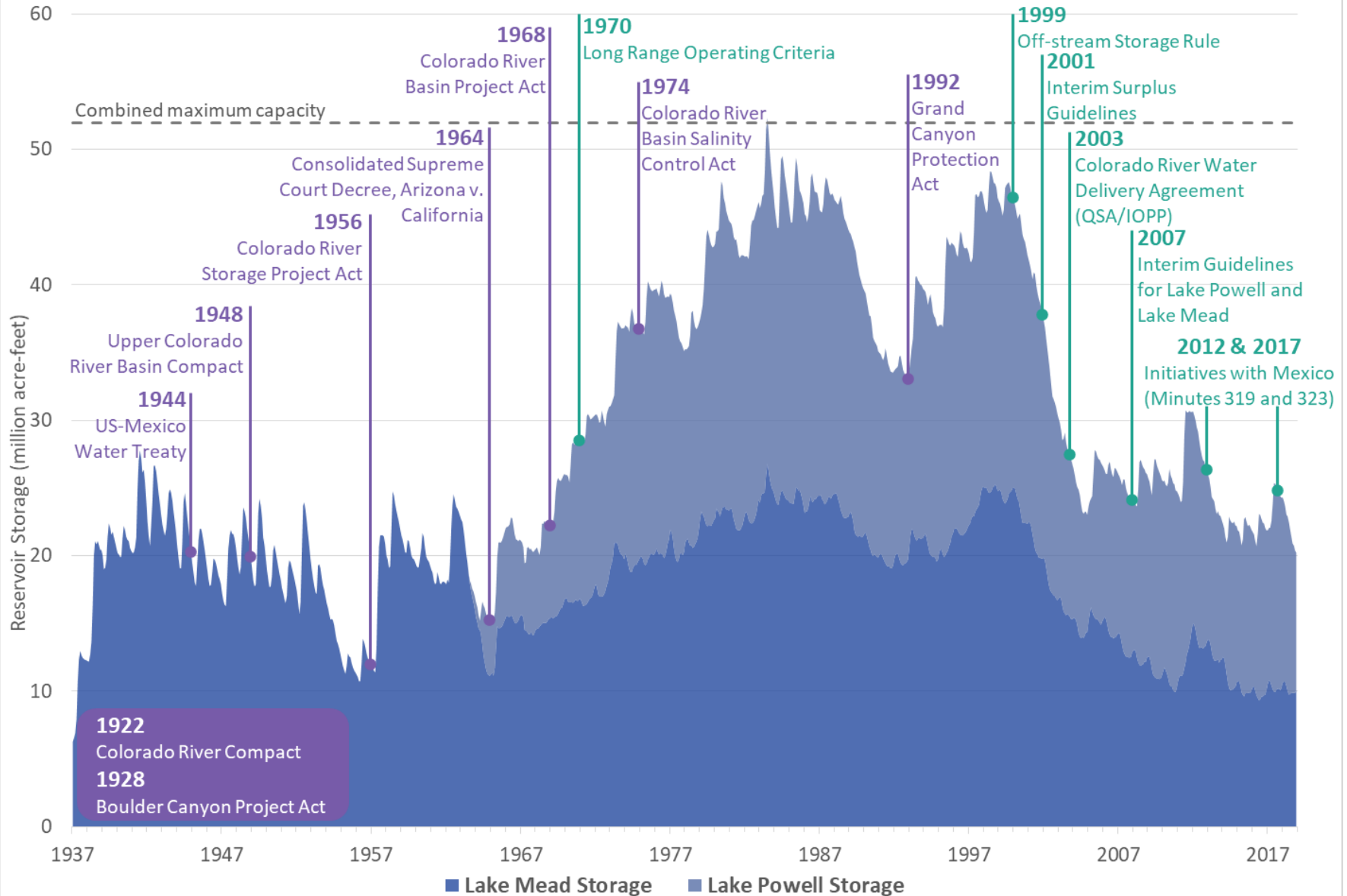
Lincoln Institute of Land Policy - 2019 Journalists Forum  
Phoenix, AZ  
March 29, 2019

# Colorado River – Operational Setting

- 16.5 million acre-feet (maf) allocated annually
  - 7.5 maf to Upper Basin
  - 7.5 maf to Lower Basin
  - 1.5 maf to Mexico
- Average consumptive use is about 13 to 14.5 maf annually
- 16 maf average annual “natural flow” (from historical record)
  - 14.8 maf in the Upper Basin
  - 1.3 maf in the Lower Basin
- Inflows highly variable year to year
- 60 maf of storage (about 4 times the annual average inflow)
- Operations and water deliveries governed by the “Law of the River”



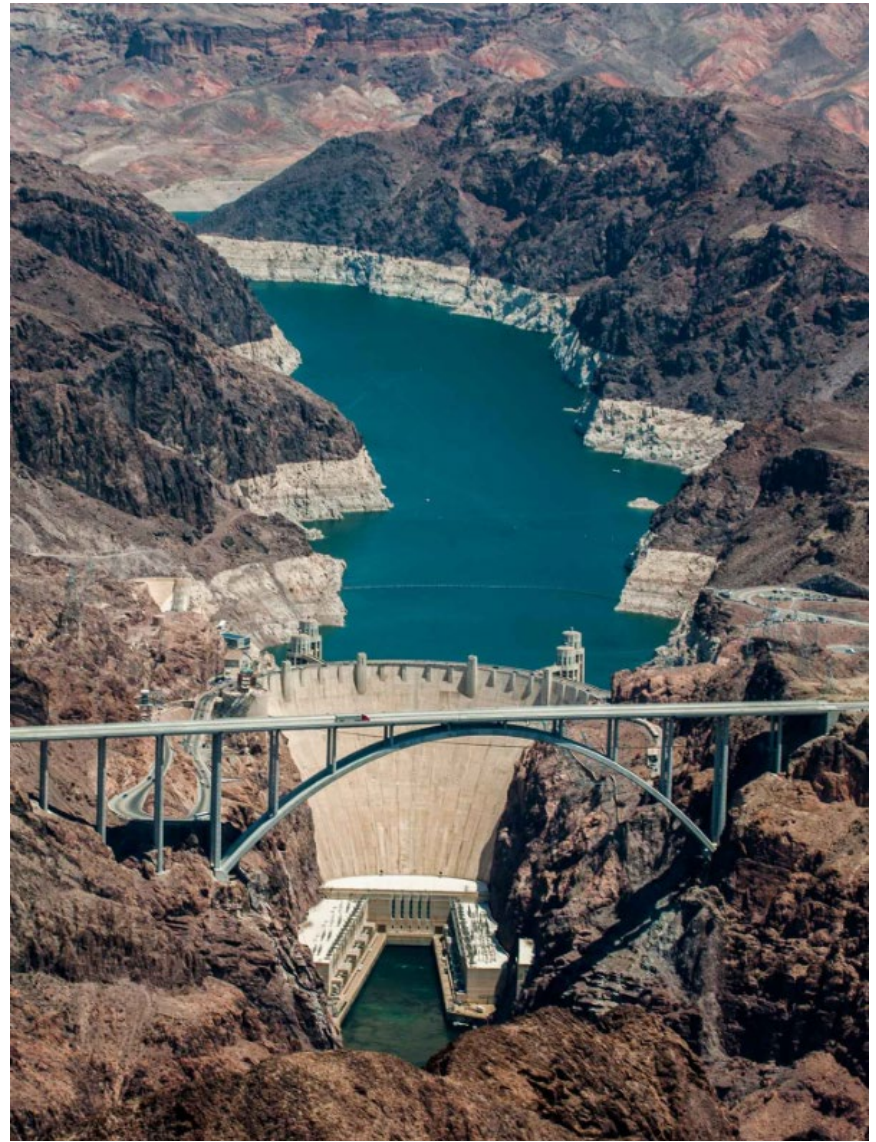
# Lake Powell and Lake Mead Combined Storage







Lake Mead near Hoover Dam in 2000



Lake Mead near Hoover Dam in 2016

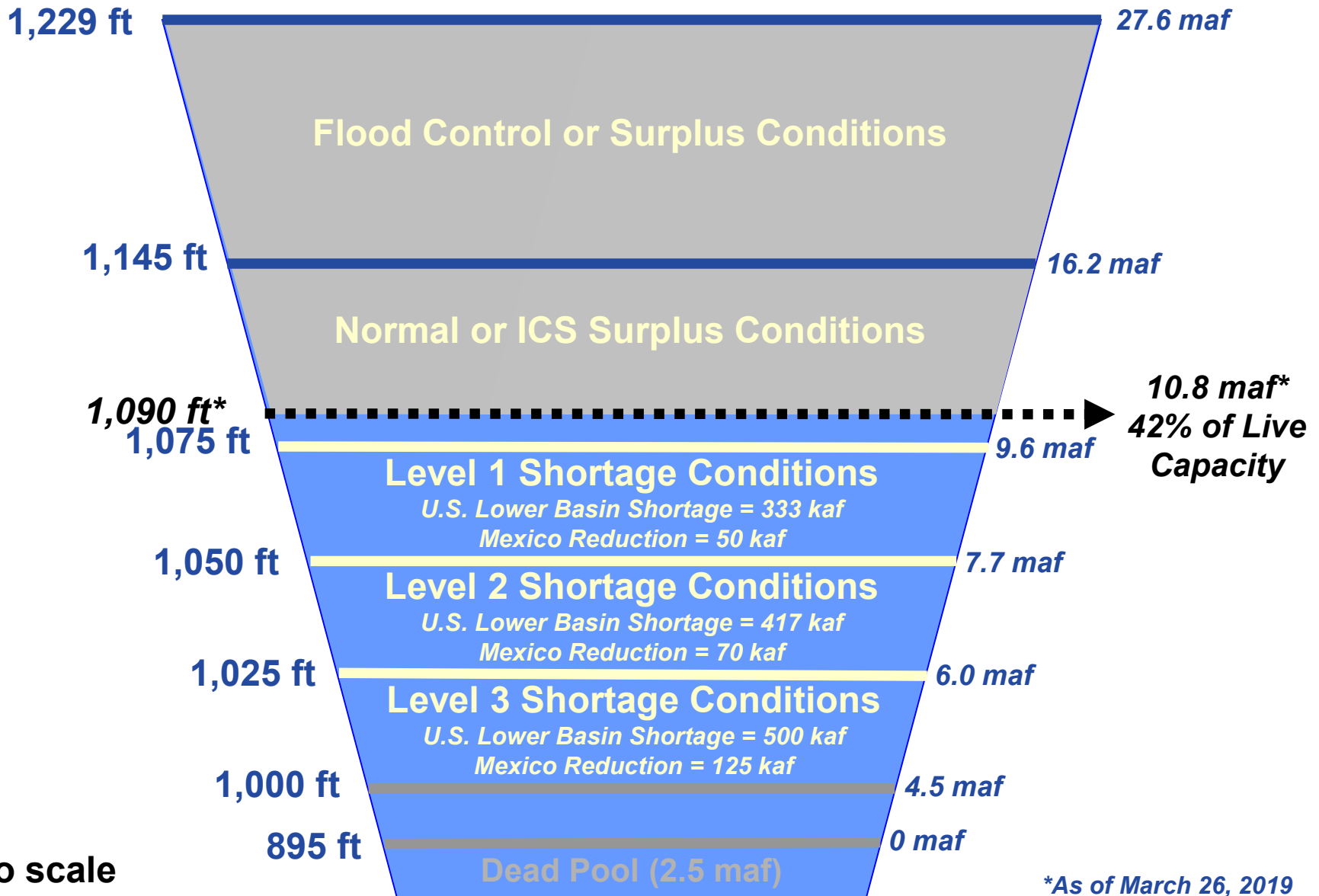


# Overview of the 2007 Interim Guidelines



- In place for an interim period from 2007 through 2026
- Provide for coordinated operations of Lake Powell and Lake Mead at the full range of reservoir conditions
- Establish the Intentionally Created Surplus (ICS) mechanism
- Establish guidelines for determining a shortage condition in the Lower Basin
- Does not include provisions for Mexico
  - Operational agreements with Mexico are established through “Minutes” by the International Boundary and Water Commission (IBWC)

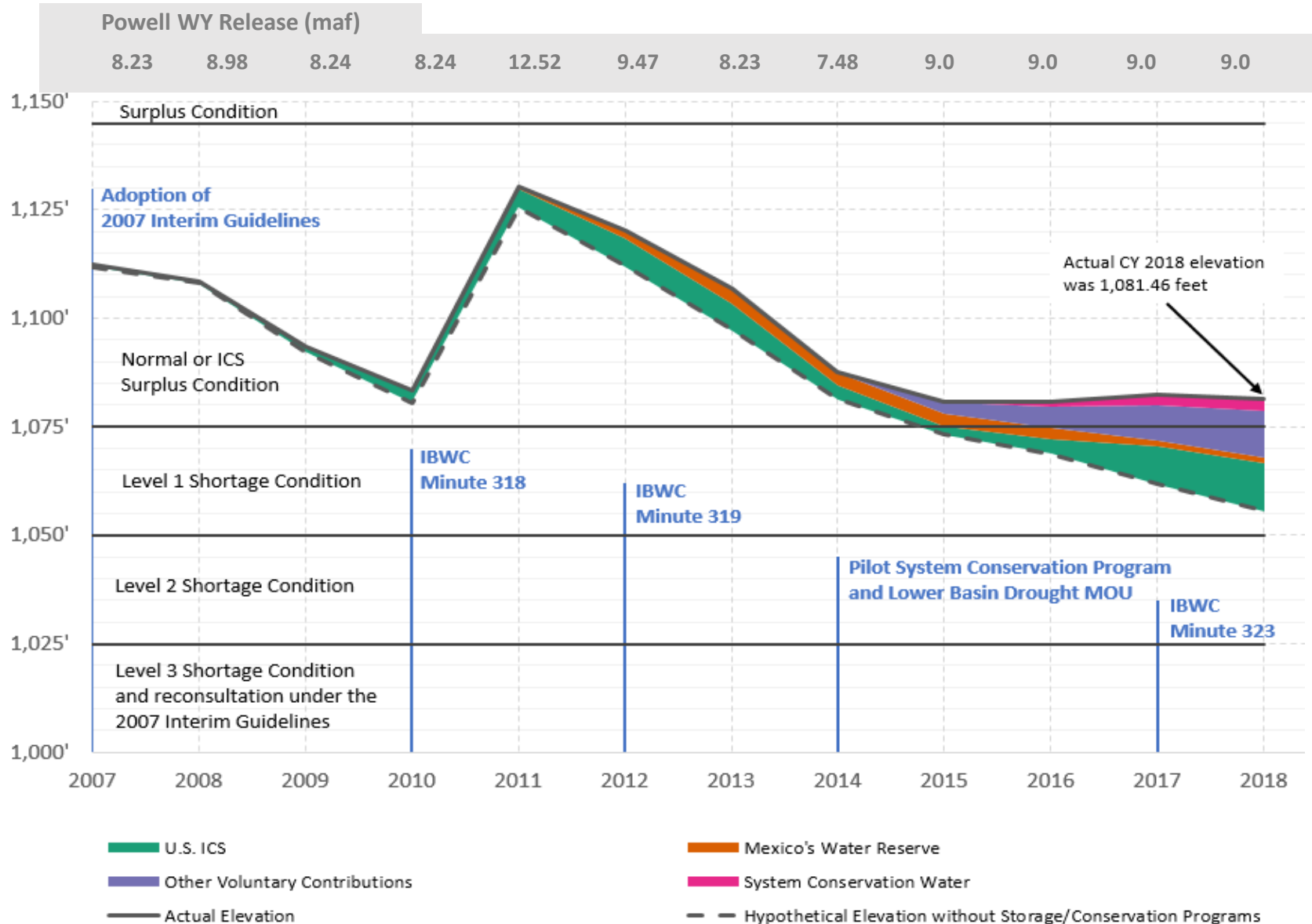
# Lake Mead – Key Elevations<sup>1,2</sup>



<sup>1</sup> U.S. Lower Basin shortage volumes based on the 2007 Interim Guidelines (in place 2007-2026).

<sup>2</sup> Mexico reductions based on Minute 323 (in place 2017-2026).

# Lake Mead End-of-Calendar Year Elevation



End of calendar year 2018 balances of U.S. ICS and Mexico's Water Reserve, system conservation water, and other voluntary contributions to Lake Mead are provisional and subject to change.



