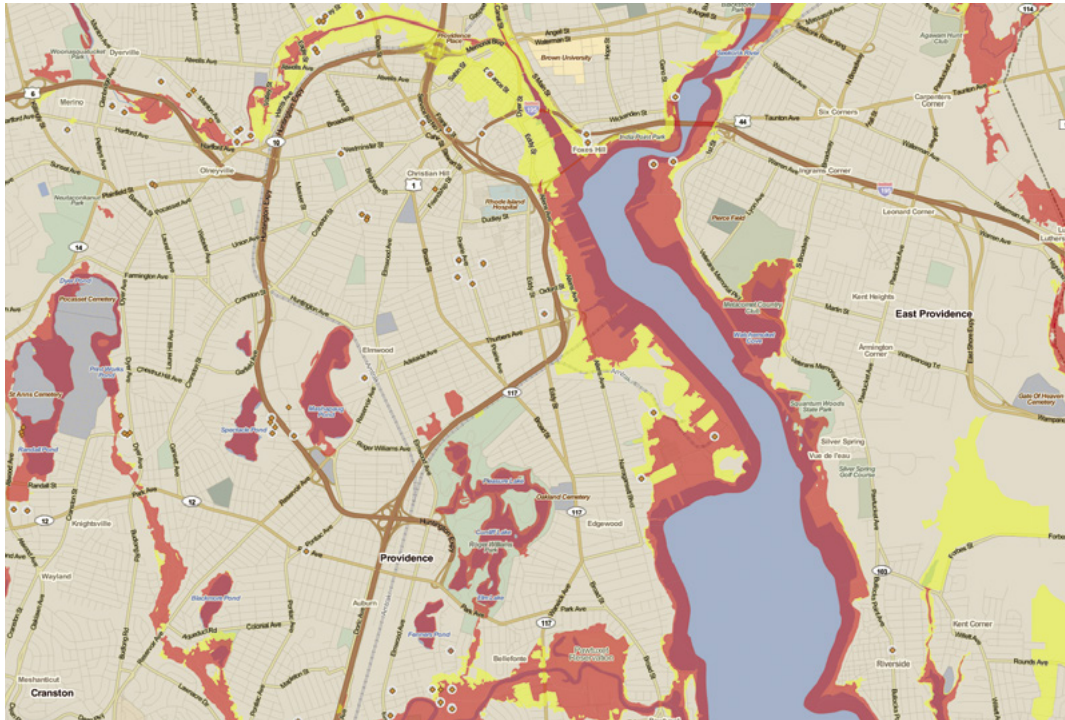







Brownfields in High and Moderate Flood Risk Areas in Providence, RI



Map Boundaries (As of 2018)

-  High Flood Risk
-  Moderate Flood Risk
-  Brownfield

Though frequently seen as an urban liability, brownfields can be an asset. The cost to remediate these formerly developed properties is often high, but they present valuable opportunities for revitalization and redevelopment. According to the EPA, waterfront brownfields “can play an important role in bolstering local resilience to increased flooding, storm surge, or temperatures from a changing climate.” In Providence, brownfields are a top priority in the ongoing effort to revitalize river corridors and riverfront areas.

Sources: Brownfield Revitalization in Climate-Vulnerable Areas, U.S. EPA, 2016; Woonasquatucket Vision Plan, City of Providence, 2018.