

INTERNATIONAL CONFERENCE ON MUNICIPAL FISCAL HEALTH



LINCOLN INSTITUTE
OF LAND POLICY



PROGRAM BOOK

MAY 21 – 23, 2018

WESTIN BOOK CADILLAC HOTEL
DETROIT, MICHIGAN, UNITED STATES

@LANDPOLICY | #FISCALHEALTH



On behalf of the Lincoln Institute of Land Policy, we are delighted to welcome you to the city of Detroit, Michigan for our 2018 International Conference on Municipal Fiscal Health.

The Lincoln Institute is dedicated to solving global economic, social, and environmental challenges to improve quality of life. In 2015, we recognized that the fiscal challenges facing the world's municipalities are enormous, and we launched a Municipal Fiscal Health Campaign to help leaders confront an epidemic of insolvency and restore the capacity for local governments to provide basic services and maintain sustainable fiscal bases. Land-based revenues play a key role in meeting these challenges.

Achieving fiscal health is a fundamental first step to a successful economic future for cities across the developed and developing world. Over the course of the campaign in the last three years, we have been privileged to brief members of the United States Congress on the importance of municipal fiscal health. With the World Bank, we led the development of the policy paper on municipal finance to guide the United Nations' New Urban Agenda. We have also commissioned new research and expanded our trainings and courses in municipal finance in partnership with numerous universities and stakeholders. This international conference is a seminal event in the body of work for the campaign—convening leading experts for an international dialogue that further elevates municipal fiscal health as an issue of global importance.

We selected Detroit as the location for our conference in view of the remarkable efforts of its leaders to revitalize its economy and fiscal base following a historic municipal bankruptcy. Detroit and numerous other cases featured throughout this conference offer valuable lessons to a global audience focused on achieving sustainable municipal fiscal health.

We recognize that the power of this conference resides in the people who engage with us in conversations around these important issues. We look forward to meeting you this week and hope that you will take the insights from the conversations that occur over the next three days to enrich the communities you work with and change their trajectories for the better.

Sincerely,

George W. "Mac" McCarthy
President & CEO

Lourdes Germán
Director, International & Institute-wide Initiatives

CONFERENCE SPONSORS:



CHARLES STEWART
MOTT FOUNDATION



FORD
FOUNDATION

THE
KRESGE
FOUNDATION

CONFERENCE HOST COMMITTEE:

David Amborski
Ryerson University

Daniel Bergstresser
Brandeis International Business School

Andres Blanco
Inter-American Development Bank

Donald Boyd
Lincoln Institute of Land Policy

Riël Franzsen
African Tax Institute

William Glasgall
Volcker Alliance

W. Bartley Hildreth
Georgia State University

Yu-Hung Hong
Land Governance Lab

Susan Kendall
Hilltop Securities

Julie Kim
Stanford University

Neil Kleiman
National Resource Network

Danielle Lewinski
Center for Community Progress

Tzu-Chin Lin
National Chengchi University

Katharine Lusk
Boston University Initiative on Cities

Joyce Man
Peking University Shenzhen Graduate School

Christiana McFarland
National League of Cities

Mary Murphy
The Pew Charitable Trusts

Sock-Yong Phang
Singapore Management University

Dmitry Pozhidaev
United Nations Capital Development Fund

Vitor Puppi
City of Curitiba, Brazil

Francisca Rojas
Inter-American Development Bank

Ana Claudia Rossbach
Cities Alliance

Enid Slack
University of Toronto

Robert Triest
Federal Reserve Bank of Boston

Paolo Veneri
*Organisation for Economic Co-operation
and Development*



1:00 PM

3:00 PM

REGISTRATION

LOCATION: Woodward Ballroom Foyer, 2nd Floor

3:00 PM

3:40 PM

CONFERENCE WELCOME

Leaders from the State of Michigan and City of Detroit will welcome our audience and offer brief remarks on the current state of the economy and fiscal profile of the State of Michigan and City of Detroit.

SPEAKERS:

State Treasurer Nick A. Khouri, Michigan Department of Treasury

Mayor Mike Duggan, City of Detroit, Michigan

LOCATION: Woodward AB

3:40 PM

5:30 PM

PLENARY: Creating Inclusive and Equitable Cities: Launch of Organisation for Economic Cooperation and Development (OECD) Cities Report

Cities are responsible for most services delivered to residents—making them a major actor in public-sector spending and in fostering sustainable, equitable, and inclusive growth. This panel will begin with the global launch of the OECD report “Divided Cities: Understanding Intra-Urban Inequalities,” a new study that explores equity in cities from different perspectives and discusses the factors that produce different outcomes (e.g., income and spatial segregation, migrant status, access to transit, among others), and recommends how policies and systems (e.g., local fiscal frameworks) can be structured to avoid intra-urban disparities. Following the presentation of the report, the CEO of the Lincoln Institute will lead a discussion with mayors and academics on how the themes highlighted in the report are present in their cities and the role that municipal finance plays in enabling programs and policies that create equitable and inclusive cities.

MODERATOR: George W. “Mac” McCarthy, Lincoln Institute of Land Policy

PRESENTER: Paolo Veneri, OECD

SPEAKERS:

City Manager Kurt Wilson, City of Stockton, California

Deputy Mayor and CFO Brendan Hanlon, City and County of Denver, Colorado

Mayor Manuel Velarde Dellepiane, Municipality of San Isidro, Lima, Peru

Sock-Yong Phang, Singapore Management University

LOCATION: Woodward AB

5:30 PM

7:30 PM

NETWORKING RECEPTION

Drinks and refreshments will be served

LOCATION: Venetian Ballroom, 4th Floor



8:00 AM
–
8:30 AM

BREAKFAST, REGISTRATION, NETWORKING

LOCATION: Woodward AB

8:30 AM
–
10:00 AM

PLENARY: The Role of Higher Levels of Government in Municipal Fiscal Health

The strengths and challenges of local government fiscal systems are shaped by the broader intergovernmental framework for the municipality. This panel will convene a cross-section of leaders discussing strategies, policies, and programs emerging from higher levels of government that enable strong fiscal systems in cities.

MODERATOR: Mary Murphy, The Pew Charitable Trusts

SPEAKERS: Ehtisham Ahmad, London School of Economics; Richard Little, Richard G. Little, AICP;

Sally Wallace, Georgia State University

LOCATION: Woodward AB

10:00 AM
–
11:00 AM

PANEL: What is a Fiscally Healthy City?

Experts on the panel will engage in a moderated discussion that focuses on defining municipal fiscal health and offers lessons and cases of successful policies, practices, and programs that enable the development of strong fiscal systems in cities.

MODERATOR: Christiana McFarland, National League of Cities

SPEAKERS:

Tracey Hitchen Boyd, New York State Office of the State Comptroller

Eric Scorsone, State of Michigan

Enid Slack, University of Toronto

LOCATION: Woodward AB

PANEL: Decline and Regeneration – The Challenges and Opportunities of Fiscally Distressed Cities

Leaders will share success stories and discuss lessons learned from their experiences in cities that have emerged from fiscal distress and municipal bankruptcy. They will explore how cities have charted a path to financial stability.

MODERATOR: William Glasgall, Volcker Alliance

SPEAKERS:

CFO Jeffrey DeWitt, District of Columbia

CFO Matt Paulin, City of Stockton, California

Richard Ravitch, Former Lieutenant Governor, State of New York

LOCATION: Woodward C

RESEARCH: Measuring the Fiscal Health of Municipalities and Developing Warning Systems for Local Fiscal Distress

Original research focused on the themes will be presented, followed by moderator and audience Q&A.

FACILITATOR: Luis Quintanilla, Lincoln Institute of Land Policy

RESEARCHERS:

Bruce McDonald, North Carolina State University, "Measuring the Fiscal Distress of Municipalities"

Tracy Gordon, The Urban Institute, "Developing an Early Warning System for Local Fiscal Distress"

LOCATION: Woodward D

11:00 AM
–
11:15 AM

COFFEE BREAK

11:15 AM
–
12:15 PM

PANEL: U.S. Tax Reform and Its Impact on State and Local Government Finance

This panel will bring together experts to discuss the likely impacts of the new U.S. federal tax legislation (Tax Cut and Jobs Act) on the financing of state and local governments and the municipal markets.

MODERATOR: Daphne Kenyon, Lincoln Institute of Land Policy

SPEAKERS:

Jane Campbell, National Development Council

Timothy Coffin, Breckinridge Capital Advisors

Andrew Reschovsky, Lincoln Institute of Land Policy

LOCATION: Woodward AB

PANEL: International Lessons on the Property Tax and Land-Based Revenues

The property tax and land based-revenues are critical sources of local revenues around the world. This panel will delve into policies, practices, and prevailing approaches of how property tax and land-based revenues are used to support public services and infrastructure.

MODERATOR: Joan Youngman, Lincoln Institute of Land Policy

SPEAKERS:

Yu-Hung Hong, Land Governance Laboratory

Harry Kitchen, Trent University

Dirk Scholtz, University of Pretoria

LOCATION: Woodward C

RESEARCH: Evaluating Municipal Fiscal Systems

Original research focused on the themes will be presented, followed by moderator and audience Q&A.

FACILITATOR: W. Bartley Hildreth, Georgia State University

RESEARCHERS:

Howard Chernick, Hunter College, City University of New York, "Evaluating the Effect of Differences in Revenue Systems on the Fiscal Health of Large U.S. Cities"

Michael Overton, University of Idaho, "Reconsidering Economic Development and Local Government Fiscal Health: Finding the Linkages between a City's Economic Base and its Budget Volatility"

LOCATION: Woodward D

12:15 PM
–
1:45 PM

NETWORKING LUNCH

LOCATION: Woodward AB



1:45 PM
–
2:45 PM

PANEL: The Impact of Technology and Innovation on Municipal Fiscal Health and Transparency

This panel will explore technology innovations that are impacting state and local finance, including perspectives from public officials using technology to engage in data-driven decision-making in the United States and abroad for local and international efforts.

MODERATOR: Adam Langley, Lincoln Institute of Land Policy

SPEAKERS:

Donald Boyd, Lincoln Institute of Land Policy

George Friedlander, Court Street Group

Nico Larco, University of Oregon Sustainable Cities Initiative

LOCATION: Woodward AB

PANEL: Meeting the Global Infrastructure Gap

Cities are facing enormous challenges on a global scale funding infrastructure. This session will explore how land-based revenues, access to capital markets, and other avenues of public finance are being leveraged by cities to meet widening infrastructure gaps. Cases of large-scale redevelopment projects in the U.S. and abroad will also be discussed.

MODERATOR: Zhi Liu, Lincoln Institute of Land Policy

SPEAKERS:

Michael Bennon, Stanford Global Projects Center

Joyce Man, Peking University Shenzhen Graduate School

Ana Claudia Rosbach, Cities Alliance

LOCATION: Woodward C

RESEARCH: The Role of Land-Based Revenues in Municipal Revenue Frameworks

Original research focused on the themes will be presented, followed by moderator and audience Q&A.

FACILITATOR: Sena Segbedzi, Lincoln Institute of Land Policy & OECD

RESEARCHERS:

Cynthia Goytia, Torcuato Di Tella University, Buenos Aires, "Urban Property and Land Taxation in Argentina: The Challenge of Decentralization"

Martim Smolka, Lincoln Institute of Land Policy, "Assessing the Monetary Relevance of Land Value Capture: the Case for Charges for Additional Building Rights in São Paulo, Brazil"

Martim Smolka, Lincoln Institute of Land Policy, "Assessing the Monetary Relevance of Land Value Capture: the Case for Charges for Additional Building Rights in São Paulo, Brazil"

Martim Smolka, Lincoln Institute of Land Policy, "Assessing the Monetary Relevance of Land Value Capture: the Case for Charges for Additional Building Rights in São Paulo, Brazil"

Martim Smolka, Lincoln Institute of Land Policy, "Assessing the Monetary Relevance of Land Value Capture: the Case for Charges for Additional Building Rights in São Paulo, Brazil"

Martim Smolka, Lincoln Institute of Land Policy, "Assessing the Monetary Relevance of Land Value Capture: the Case for Charges for Additional Building Rights in São Paulo, Brazil"

Martim Smolka, Lincoln Institute of Land Policy, "Assessing the Monetary Relevance of Land Value Capture: the Case for Charges for Additional Building Rights in São Paulo, Brazil"

Martim Smolka, Lincoln Institute of Land Policy, "Assessing the Monetary Relevance of Land Value Capture: the Case for Charges for Additional Building Rights in São Paulo, Brazil"

Martim Smolka, Lincoln Institute of Land Policy, "Assessing the Monetary Relevance of Land Value Capture: the Case for Charges for Additional Building Rights in São Paulo, Brazil"

Martim Smolka, Lincoln Institute of Land Policy, "Assessing the Monetary Relevance of Land Value Capture: the Case for Charges for Additional Building Rights in São Paulo, Brazil"

Martim Smolka, Lincoln Institute of Land Policy, "Assessing the Monetary Relevance of Land Value Capture: the Case for Charges for Additional Building Rights in São Paulo, Brazil"

Martim Smolka, Lincoln Institute of Land Policy, "Assessing the Monetary Relevance of Land Value Capture: the Case for Charges for Additional Building Rights in São Paulo, Brazil"

Martim Smolka, Lincoln Institute of Land Policy, "Assessing the Monetary Relevance of Land Value Capture: the Case for Charges for Additional Building Rights in São Paulo, Brazil"

Martim Smolka, Lincoln Institute of Land Policy, "Assessing the Monetary Relevance of Land Value Capture: the Case for Charges for Additional Building Rights in São Paulo, Brazil"

Martim Smolka, Lincoln Institute of Land Policy, "Assessing the Monetary Relevance of Land Value Capture: the Case for Charges for Additional Building Rights in São Paulo, Brazil"

Martim Smolka, Lincoln Institute of Land Policy, "Assessing the Monetary Relevance of Land Value Capture: the Case for Charges for Additional Building Rights in São Paulo, Brazil"

Martim Smolka, Lincoln Institute of Land Policy, "Assessing the Monetary Relevance of Land Value Capture: the Case for Charges for Additional Building Rights in São Paulo, Brazil"

Martim Smolka, Lincoln Institute of Land Policy, "Assessing the Monetary Relevance of Land Value Capture: the Case for Charges for Additional Building Rights in São Paulo, Brazil"

Martim Smolka, Lincoln Institute of Land Policy, "Assessing the Monetary Relevance of Land Value Capture: the Case for Charges for Additional Building Rights in São Paulo, Brazil"

Martim Smolka, Lincoln Institute of Land Policy, "Assessing the Monetary Relevance of Land Value Capture: the Case for Charges for Additional Building Rights in São Paulo, Brazil"

Martim Smolka, Lincoln Institute of Land Policy, "Assessing the Monetary Relevance of Land Value Capture: the Case for Charges for Additional Building Rights in São Paulo, Brazil"

Martim Smolka, Lincoln Institute of Land Policy, "Assessing the Monetary Relevance of Land Value Capture: the Case for Charges for Additional Building Rights in São Paulo, Brazil"

Martim Smolka, Lincoln Institute of Land Policy, "Assessing the Monetary Relevance of Land Value Capture: the Case for Charges for Additional Building Rights in São Paulo, Brazil"

Martim Smolka, Lincoln Institute of Land Policy, "Assessing the Monetary Relevance of Land Value Capture: the Case for Charges for Additional Building Rights in São Paulo, Brazil"

Martim Smolka, Lincoln Institute of Land Policy, "Assessing the Monetary Relevance of Land Value Capture: the Case for Charges for Additional Building Rights in São Paulo, Brazil"

Martim Smolka, Lincoln Institute of Land Policy, "Assessing the Monetary Relevance of Land Value Capture: the Case for Charges for Additional Building Rights in São Paulo, Brazil"

Martim Smolka, Lincoln Institute of Land Policy, "Assessing the Monetary Relevance of Land Value Capture: the Case for Charges for Additional Building Rights in São Paulo, Brazil"

Martim Smolka, Lincoln Institute of Land Policy, "Assessing the Monetary Relevance of Land Value Capture: the Case for Charges for Additional Building Rights in São Paulo, Brazil"

Martim Smolka, Lincoln Institute of Land Policy, "Assessing the Monetary Relevance of Land Value Capture: the Case for Charges for Additional Building Rights in São Paulo, Brazil"

Martim Smolka, Lincoln Institute of Land Policy, "Assessing the Monetary Relevance of Land Value Capture: the Case for Charges for Additional Building Rights in São Paulo, Brazil"

Martim Smolka, Lincoln Institute of Land Policy, "Assessing the Monetary Relevance of Land Value Capture: the Case for Charges for Additional Building Rights in São Paulo, Brazil"

Martim Smolka, Lincoln Institute of Land Policy, "Assessing the Monetary Relevance of Land Value Capture: the Case for Charges for Additional Building Rights in São Paulo, Brazil"

Martim Smolka, Lincoln Institute of Land Policy, "Assessing the Monetary Relevance of Land Value Capture: the Case for Charges for Additional Building Rights in São Paulo, Brazil"

Martim Smolka, Lincoln Institute of Land Policy, "Assessing the Monetary Relevance of Land Value Capture: the Case for Charges for Additional Building Rights in São Paulo, Brazil"

Martim Smolka, Lincoln Institute of Land Policy, "Assessing the Monetary Relevance of Land Value Capture: the Case for Charges for Additional Building Rights in São Paulo, Brazil"

Martim Smolka, Lincoln Institute of Land Policy, "Assessing the Monetary Relevance of Land Value Capture: the Case for Charges for Additional Building Rights in São Paulo, Brazil"

Martim Smolka, Lincoln Institute of Land Policy, "Assessing the Monetary Relevance of Land Value Capture: the Case for Charges for Additional Building Rights in São Paulo, Brazil"

Martim Smolka, Lincoln Institute of Land Policy, "Assessing the Monetary Relevance of Land Value Capture: the Case for Charges for Additional Building Rights in São Paulo, Brazil"

Martim Smolka, Lincoln Institute of Land Policy, "Assessing the Monetary Relevance of Land Value Capture: the Case for Charges for Additional Building Rights in São Paulo, Brazil"

Martim Smolka, Lincoln Institute of Land Policy, "Assessing the Monetary Relevance of Land Value Capture: the Case for Charges for Additional Building Rights in São Paulo, Brazil"

Martim Smolka, Lincoln Institute of Land Policy, "Assessing the Monetary Relevance of Land Value Capture: the Case for Charges for Additional Building Rights in São Paulo, Brazil"

Martim Smolka, Lincoln Institute of Land Policy, "Assessing the Monetary Relevance of Land Value Capture: the Case for Charges for Additional Building Rights in São Paulo, Brazil"

Martim Smolka, Lincoln Institute of Land Policy, "Assessing the Monetary Relevance of Land Value Capture: the Case for Charges for Additional Building Rights in São Paulo, Brazil"

Martim Smolka, Lincoln Institute of Land Policy, "Assessing the Monetary Relevance of Land Value Capture: the Case for Charges for Additional Building Rights in São Paulo, Brazil"

Martim Smolka, Lincoln Institute of Land Policy, "Assessing the Monetary Relevance of Land Value Capture: the Case for Charges for Additional Building Rights in São Paulo, Brazil"

Martim Smolka, Lincoln Institute of Land Policy, "Assessing the Monetary Relevance of Land Value Capture: the Case for Charges for Additional Building Rights in São Paulo, Brazil"

Martim Smolka, Lincoln Institute of Land Policy, "Assessing the Monetary Relevance of Land Value Capture: the Case for Charges for Additional Building Rights in São Paulo, Brazil"

Martim Smolka, Lincoln Institute of Land Policy, "Assessing the Monetary Relevance of Land Value Capture: the Case for Charges for Additional Building Rights in São Paulo, Brazil"

Martim Smolka, Lincoln Institute of Land Policy, "Assessing the Monetary Relevance of Land Value Capture: the Case for Charges for Additional Building Rights in São Paulo, Brazil"

Martim Smolka, Lincoln Institute of Land Policy, "Assessing the Monetary Relevance of Land Value Capture: the Case for Charges for Additional Building Rights in São Paulo, Brazil"

Martim Smolka, Lincoln Institute of Land Policy, "Assessing the Monetary Relevance of Land Value Capture: the Case for Charges for Additional Building Rights in São Paulo, Brazil"

Martim Smolka, Lincoln Institute of Land Policy, "Assessing the Monetary Relevance of Land Value Capture: the Case for Charges for Additional Building Rights in São Paulo, Brazil"

Martim Smolka, Lincoln Institute of Land Policy, "Assessing the Monetary Relevance of Land Value Capture: the Case for Charges for Additional Building Rights in São Paulo, Brazil"

Martim Smolka, Lincoln Institute of Land Policy, "Assessing the Monetary Relevance of Land Value Capture: the Case for Charges for Additional Building Rights in São Paulo, Brazil"

Martim Smolka, Lincoln Institute of Land Policy, "Assessing the Monetary Relevance of Land Value Capture: the Case for Charges for Additional Building Rights in São Paulo, Brazil"

Martim Smolka, Lincoln Institute of Land Policy, "Assessing the Monetary Relevance of Land Value Capture: the Case for Charges for Additional Building Rights in São Paulo, Brazil"

2:45 PM
–
3:00 PM

COFFEE BREAK

3:00 PM
–
4:15 PM

PANEL: Revitalizing America's Legacy Cities

Experts on this panel will discuss the findings of the "Revitalizing America's Smaller Legacy Cities" report, as well as other work focused on the range of strategies that are necessary for cities to succeed, including how municipal fiscal policies can be adopted to position cities in decline on a course for revitalization.

MODERATOR: Jessie Grogan, Lincoln Institute of Land Policy

SPEAKERS:

Alan Mallach, Center for Community Progress

Mayor Daniel Rivera, City of Lawrence, Massachusetts

Chantel Rush, The Kresge Foundation

LOCATION: Woodward AB

WORKSHOP: Government Finance Officers Association (GFOA) Fiscal Sustainability Index Workshop

The GFOA will introduce its Fiscal Sustainability Index, a tool developed from original research published in a 2017 GFOA report and designed to help local governments build strong fiscal systems. The workshop will share lessons learned in GFOA's yearlong fiscal sustainability capacity-building series for local government leaders across the United States.

FACILITATOR: Adam Langley, Lincoln Institute of Land Policy

PRESENTERS:

Shayne Kavanagh, GFOA

Vincent Reitano, GFOA

LOCATION: Woodward C

WORKSHOP: United Nations Capital Development Fund (UNCDF) Global Lessons in Sustainable Finance Workshop

The UNCDF makes public and private finance work for the poor in the world's 47 least-developed countries (LDCs). This workshop will introduce participants to the work of UNCDF and provide them with an opportunity to learn about the prevailing instruments and approaches to municipal finance that are being used across the developing world.

FACILITATOR: Rohan Kocharekar, Lincoln Institute of Land Policy

PRESENTER:

David Jackson, UNCDF

LOCATION: Woodward D

5:00 PM
–
6:15 PM

OPTIONAL WALKING TOUR: Detroit – From Bankruptcy to Revitalization (pre-registration is required)

This mobile workshop will bring participants through portions of the City of Detroit Downtown area that are undergoing revitalization, following the city's exit from municipal bankruptcy.

LOCATION AND INSTRUCTIONS: The tour will depart from (and return to) the 1st floor Westin Hotel lobby (meet in the lobby by 4:50 pm). The tour will last one hour. We encourage those attending to wear comfortable shoes.

6:30 PM
–
8:00 PM

RECEPTION: Reimagining Detroit

Drinks, appetizers, pasta and dessert stations

The reception will give participants the opportunity to network and hear brief remarks from Detroit's Chief Financial Officer John Hill and Danielle Lewinski of the Center for Community Progress discussing Detroit's exit from bankruptcy and its path towards regeneration.

SPEAKERS: CFO John Hill, City of Detroit; **Danielle Lewinski**, Center for Community Progress

LOCATION: Colony Club, 2310 Park Ave, Detroit, MI 48201 (see back cover of this program for walking directions)



8:00 AM
–
8:30 AM

BREAKFAST, REGISTRATION, AND NETWORKING

LOCATION: Woodward AB

8:30 AM
–
10:00 AM

PLENARY: The Role of Capital and Investment in Municipal Fiscal Systems

Economic transformation in cities often requires outside investment. The ability to raise outside capital plays an important role in paying for infrastructure and other costs associated with urbanization. This panel will convene experts discussing emerging trends in the provision of capital for municipalities.

MODERATOR: Lourdes Germán, Lincoln Institute of Land Policy

SPEAKERS: Alex Alsup, Quicken Loans Community Investment Fund; Hector Negroni, FCO Advisors, LLP; Jaimie Scranton, Jefferies LLC

LOCATION: Woodward AB

10:00 AM
–
11:00 AM

PANEL: Fiscal Challenges Posed by Climate Change

Experts on this panel will examine key issues in investing in urban planning, resilience, land conservation, and water sustainability strategies to support necessary investment in climate change. Panelists will also discuss strategies that create an enabling environment and facilitate private-sector investment in these areas.

MODERATOR: Robert Triest, Federal Reserve Bank of Boston

SPEAKERS:

Claire Ferguson, C40 Cities Climate Leadership Group
Rahul Jain, S&P Global
David Levy, University of Massachusetts, Boston

LOCATION: Woodward AB

PANEL: Municipal Fiscal Health and Rural Communities

Significant attention is placed on the fiscal problems faced by cities, but rural communities similarly face a unique set of challenges. This panel will explore key issues and challenges of rural communities, focusing on rural-to-urban land transitions in countries such as India and China, domestic fiscal health trends, and the political pressures on local municipalities.

MODERATOR: Yang He, Central University of Finance and Economics

SPEAKERS:

Zhi Liu, Lincoln Institute of Land Policy
Craig Maher, University of Nebraska at Omaha
Jefferey Sellers, University of Southern California

LOCATION: Woodward C

PANEL: Intergovernmental Transfer Systems and Their Role in Municipal Revenues

Many cities face the issue of having little fiscal autonomy with respect to revenues they can raise to meet expenditures. This panel will convene leaders to discuss the challenges of inefficient intergovernmental transfer systems and surface potential solutions to address these challenges.

MODERATOR: Jenna DeAngelo, Lincoln Institute of Land Policy

SPEAKERS:

Natalie Keegan, U.S. Congressional Research Service
Arthur Minsat, OECD
Peter Del Toro, U.S. Government Accountability Office
Diego Aulestia Valencia, IDE - Universidad de Los Hemisferios

LOCATION: Woodward D

11:00 AM
–
11:15 AM

COFFEE BREAK

11:15 AM
–
12:15 PM

PANEL: Management of Obligations and Cash Flow

Unfunded obligations for public pensions and other post-employment benefits, long-term debt associated with infrastructure projects, and forgone revenue all contribute to fiscal stress. Experts on this panel will discuss these issues and address cash-management practices that governments can consider to maintain adequate liquidity and fund the operating expenses of government, in addition to capital needs.

MODERATOR: Daniel Bergstresser, Brandeis International Business School

SPEAKERS:

Thad Calabrese, New York University
Andrew Kleine, Andrew Kleine Consulting
Secretary Vitor Puppi, City of Curitiba, Brazil

LOCATION: Woodward AB

WORKSHOP: University of Chicago U.S. Public Finance Workshop

In 2018, the University of Chicago and the Lincoln Institute of Land Policy partnered to create a new executive education certificate program in Municipal Finance. The program educates city officials, urban planners, treasury officials, and practitioners with respect to leading public finance strategies. This workshop will offer a module from the course to help participants gain a window into the curriculum.

FACILITATOR: Shenmin Liu, Lincoln Institute of Land Policy

PRESENTER:

Michael Belsky, University of Chicago

LOCATION: Woodward C

WORKSHOP: Land and Urban Development Workshop

This workshop will explore the implementation of urban development and land value capture policies arising in cities in Latin America. Presenters will analyze the institutional frameworks and the instruments needed to guarantee that new infrastructure projects will benefit a municipality as a whole and contribute to a sound fiscal base.

FACILITATOR: Cynthia Goytia, Torcuato Di Tella University, Buenos Aires

PRESENTERS:

Antonio Azuela, National University, Mexico
Ciro Biderman, Getulio Vargas Foundation

LOCATION: Woodward D

12:15 PM
–
1:45 PM

LUNCH PLENARY: CONCLUDING REMARKS – Charting the Course for the Future: Municipal Finance that Enables Sustainable Development

This plenary will introduce the audience to the United Nations Agenda 2030 and the Sustainable Development Goals (SDGs) effort. The discussion will highlight current United Nations-Habitat initiatives governing jurisdictions in the U.S. and abroad that are focused on enabling strong fiscal systems and engage our audience in discussing how cities can achieve strong fiscal health and meet the challenges of sustainable urbanization.

PRESENTER: Robert Lewis-Lettington, UN-Habitat

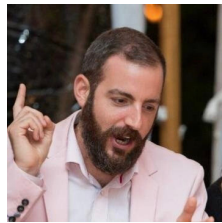
CLOSING THANK YOU: Lourdes Germán, Lincoln Institute of Land Policy

LOCATION: Woodward AB

MEET OUR SPEAKERS



Ehtisham Ahmad
Visiting Senior Fellow
London School of Economics



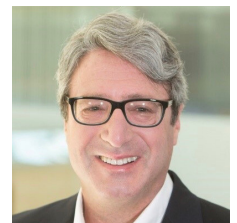
Alex Alsup
Director
Quicken Loans Community Investment



Diego Aulestia
Lecturer
Universidad de Los Hemisferios



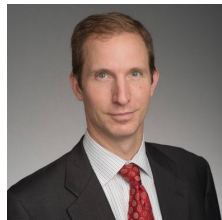
Antonio Azuela
Professor
National University, Mexico



Michael Belsky
Executive Director
University of Chicago



Michael Bennon
Managing Director
Stanford Global Projects Center



Daniel Bergstresser
Associate Professor
Brandeis International Business School



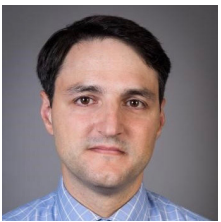
Ciro Biderman
Associate Professor
Getulio Vargas Foundation



Joan Youngman
Senior Fellow
Lincoln Institute of Land Policy



Donald Boyd
Fellow
Lincoln Institute of Land Policy



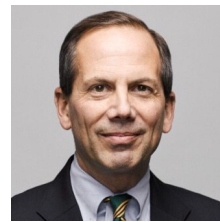
Thad Calabrese
Associate Professor
New York University



Jane Campbell
Director
National Development Council



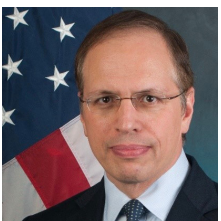
Howard Chernick
Professor Emeritus
Hunter College City University of New York



Timothy Coffin
Senior Vice President
Breckinridge Capital Advisors



Jenna DeAngelo
Program Manager
Lincoln Institute of Land Policy



Peter Del Toro
Assistant Director
U.S. Government Accountability Office



Manuel Velarde Dellepiane
Mayor
Municipality of San Isidro, Lima, Peru



Jeffrey DeWitt
Chief Financial Officer
District of Columbia



Mike Duggan
Mayor
City of Detroit, Michigan



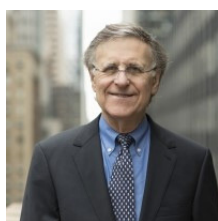
Claire Ferguson
Senior Manager
C40 Cities Climate Leadership Group



George Friedlander
Managing Partner
Court Street Group



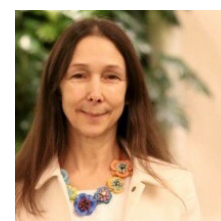
Lourdes Germán
Director
*Lincoln Institute of
Land Policy*



William Glasgall
Senior Vice President
Volcker Alliance



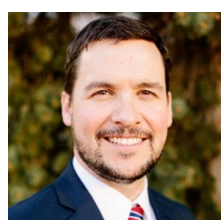
Tracy Gordon
Senior Fellow
The Urban Institute



Cynthia Goytia
Head of the Urban Policy and
Housing Research Center
*Torcuato Di Tella University,
Buenos Aires*



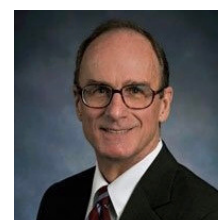
Jessie Grogan
Senior Policy Analyst
*Lincoln Institute of
Land Policy*



Brendan Hanlon
Deputy Mayor and CFO
*City and County of Denver,
Colorado*



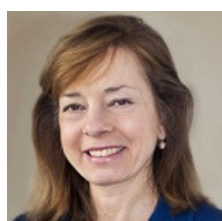
Yang He
Professor
*Central University of
Finance and Economics*



W. Bartley Hildreth
Professor
Georgia State University



John Hill
Chief Financial Officer
City of Detroit, Michigan



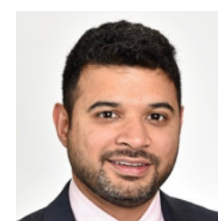
Tracey Hitchen Boyd
Assistant Comptroller
*New York State Office of
the State Comptroller*



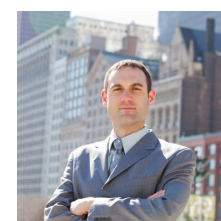
Yu-Hung Hong
Executive Director
*Land Governance
Laboratory*



David Jackson
Director
*United Nations Capital
Development Fund*



Rahul Jain
Director
S&P Global



Shayne Kavanagh
Senior Manager
*Government Finance
Officers Association*



Natalie Keegan
Analyst
*United States Congressional
Research Service*



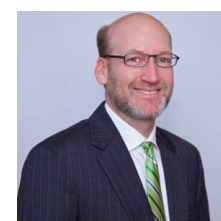
Daphne Kenyon
Resident Fellow
*Lincoln Institute of
Land Policy*



Nick A. Khouri
State Treasurer
*Michigan Department
of Treasury*



Harry Kitchen
Professor Emeritus
Trent University



Andrew Kleine
President
Andrew Kleine Consulting

MEET OUR SPEAKERS



Rohan Kocharekar
Resident Fellow
*Lincoln Institute of
Land Policy*



Adam Langley
Senior Research Analyst
*Lincoln Institute of
Land Policy*



Nico Larco
Director and Associate
Professor
University of Oregon



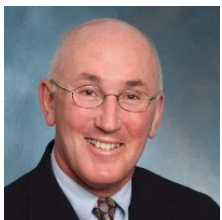
David Levy
Professor and Director
*University of
Massachusetts, Boston*



Danielle Lewinski
Vice President and Director
*Center for Community
Progress*



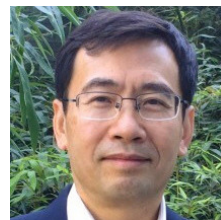
Robert Lewis-Lettington
Coordinator
United Nations Habitat



Richard Little
Infrastructure Policy
Specialist
Richard G. Little, AICP



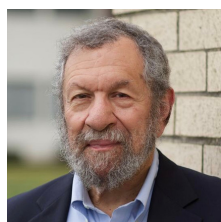
Shenmin Liu
Research Assistant
*Lincoln Institute of
Land Policy*



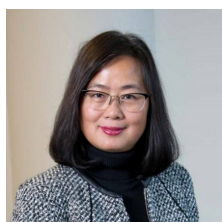
Zhi Liu
Senior Fellow and Director
*Lincoln Institute of
Land Policy*



Craig Maher
Director and Professor
*University of Nebraska
at Omaha*



Alan Mallach
Senior Fellow
*Center for Community
Progress*



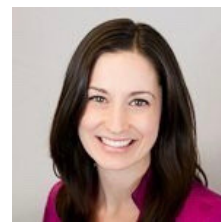
Joyce Man
Professor
*Peking University Shenzhen
Graduate School*



George McCarthy
President and CEO
*Lincoln Institute of
Land Policy*



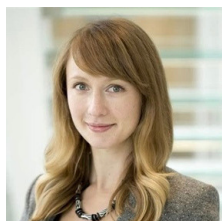
Bruce McDonald
Associate Professor
*North Carolina State
University*



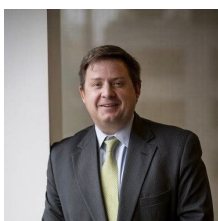
Christiana McFarland
Research Director
*National League of
Cities*



Arthur Minsat
Head of Unit
OECD



Mary Murphy
Project Director
*The Pew Charitable
Trusts*



Hector Negroni
CEO and CIO
FCO Advisors LP



Michael Overton
Assistant Professor
University of Idaho



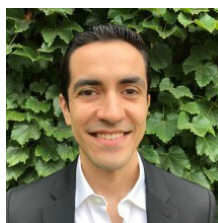
Matt Paulin
Chief Financial Officer
*City of Stockton,
California*



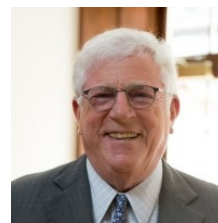
Sock-Yong Phang
Professor
*Singapore Management
University*



Vitor Puppi
Secretary of Planning,
Finance and Budget
City of Curitiba, Brazil



Luis Quintanilla
Junior Fellow
*Lincoln Institute of
Land Policy*



Richard Ravitch
Former New York State
Lieutenant Governor



Vincent Reitano
Public Finance Associate
*Government Finance
Officers Association*



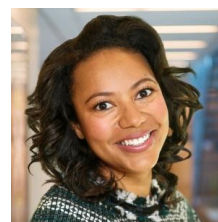
Andrew Reschovsky
Research Fellow
*Lincoln Institute of
Land Policy*



Daniel Rivera
Mayor and CEO
*City of Lawrence,
Massachusetts*



Anaclaudia Rossbach
Regional Advisor
Cities Alliance



Chantel Rush
Program Officer
The Kresge Foundation



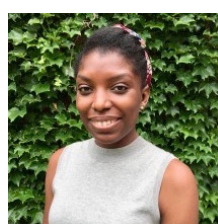
Dirk Scholtz
Senior Lecturer
*The University
of Pretoria*



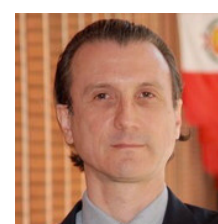
Eric Scorsone
Deputy State Treasurer
State of Michigan



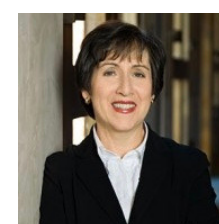
Jaimie Scranton
Managing Director
Jefferies LLC



Sena Segbedzi
Policy Analyst
*Lincoln Institute of
Land Policy & OECD*



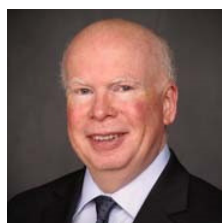
Jeffery Sellers
Professor
*University of Southern
California*



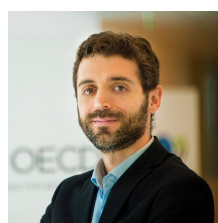
Enid Slack
Director
University of Toronto



Martim Smolka
Senior Fellow and Director
*Lincoln Institute of
Land Policy*



Robert Triest
Vice President
*Federal Reserve Bank
of Boston*



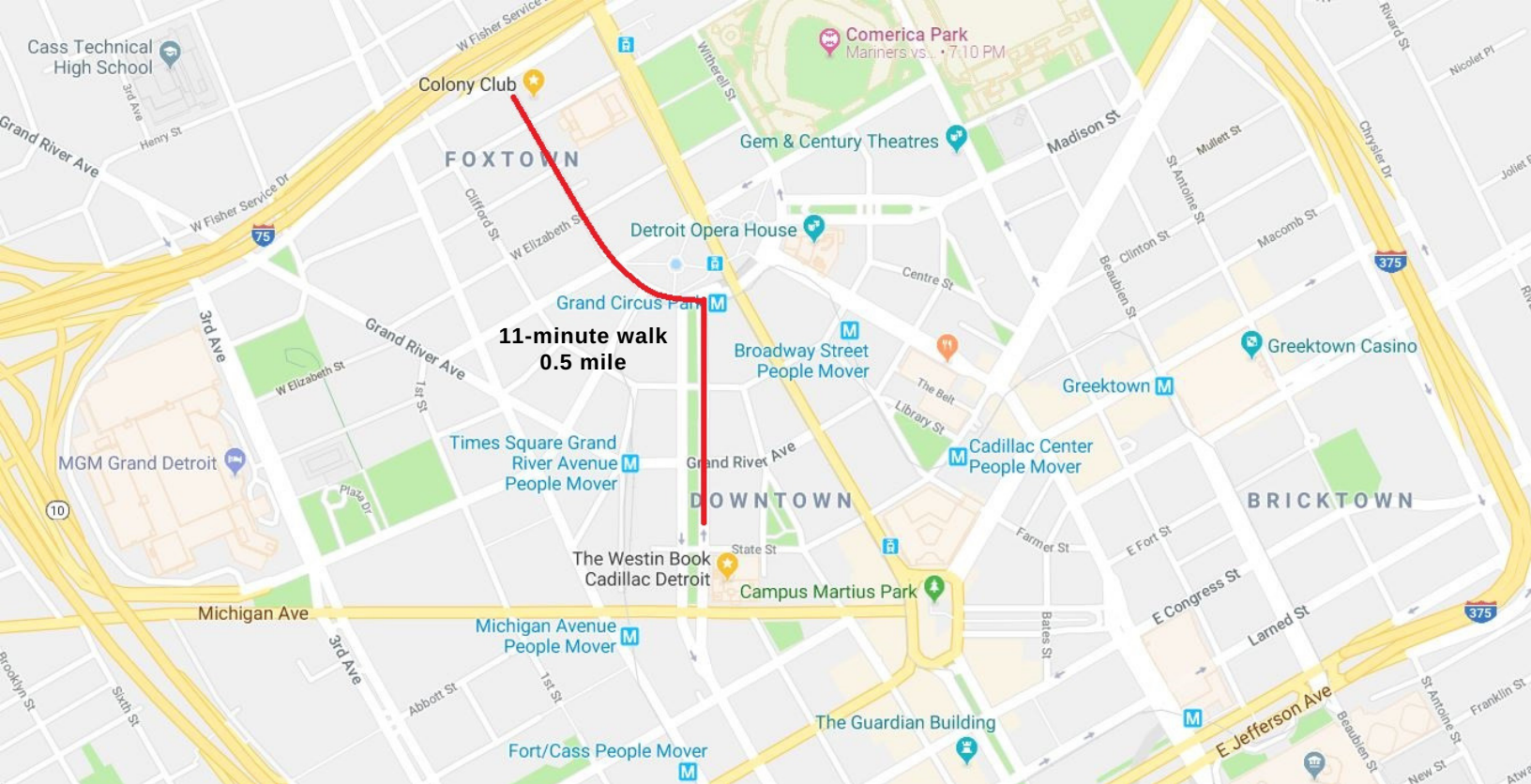
Paolo Veneri
Head of Unit
OECD



Sally Wallace
Dean
Georgia State University



Kurt Wilson
City Manager
*City of Stockton,
California*



GENERAL INFORMATION:

The Westin Book Cadillac Hotel places guests in the heart of downtown Detroit, granting exceptional access to the area's many attractions and activities. In recent years, downtown Detroit has seen a total resurgence, with a range of new dining, shopping, and cultural opportunities. Downtown Detroit features the Detroit People Mover, an aboveground rail system that makes a 2.9-mile loop, with 13 station stops, including Cobo Conference Center, GM Renaissance Center, and others. The Westin Book Cadillac Hotel is located between the Fort/Cass and Michigan Avenue stations.

Address: Westin Book Cadillac Hotel, 1114 Washington Blvd, Detroit, Michigan 48226

COLONY CLUB RECEPTION INFORMATION (MAY 22, 2018):

The historic Colony Club is centrally located on 2310 Park Avenue and serves as one of the most beautiful and popular event spaces in Detroit. It is an 11-minute walk from the Westin hotel or a 5-minute drive. A recommended walking route is included in the map above for your convenience. For local taxi or ride-sharing service information, please seek recommendations from the Westin Book Cadillac Hotel Concierge. The Colony Club is also accessible via the Detroit People Mover.

Address: The Colony Club, 2310 Park Ave, Detroit, Michigan 48201

MOBILE TOUR INFORMATION (MAY 22, 2018):

Learn about revitalization strategies and Detroit's exit from municipal bankruptcy through a tour of downtown. Highlights of the tour include Campus Martius Park, GM Renaissance Center, the new Compuware/Quicken Loans development, and other landmarks noted on the map. Preregistration is required to attend the mobile tour, and we encourage participants to wear comfortable shoes.

Location: The tour will depart from (and return to) the Westin Book Cadillac Hotel 1st floor lobby